



## Wetland Mitigation, Prairie & Stream Restoration

**The Value of Wetlands in the Watershed.** Wetlands are valuable components of watersheds. They provide important benefits, such as pollutant removal, flood storage, erosion control, wildlife habitat, and groundwater recharge. Wetland areas not only add an aesthetic value to the landscape, but provide opportunities for hunting, bird watching, wildlife photography and painting, hiking, and relaxing while appreciating the wonders of nature.

### Brown Deer Golf Course Wetlands.

In general, wetlands are the transition between dry land and water. Not all wetlands are alike; within the boundaries of the Brown Deer Golf Course you can find emergent wetland full of lily pads, pickerel weed and arrowhead; wet meadows with cardinal flower, pink turtle head and blue iris; and newly planted wooded wetlands with a variety of tree and shrub species.

### Brown Deer Golf Course Prairies & Stream Projects.

Less than one tenth of one percent of original prairie land remains in Iowa. Prairies provide important habitat for native animals and sources of food for songbirds, and offer up gorgeous blooms of wildflowers throughout the year. The golf course includes 6 acres of restored prairie.

The golf course includes a 1000 foot stretch of Muddy Creek at holes 1 and 9. After erosion problems were identified here, EarthView teamed with Shoemaker & Haaland Professional Engineers on a project to stabilize the stream banks, control flooding, and improve the aqueous habitat for fish and aquatic insects.

© 2006 by EarthView Environmental LLC, Coralville, Iowa



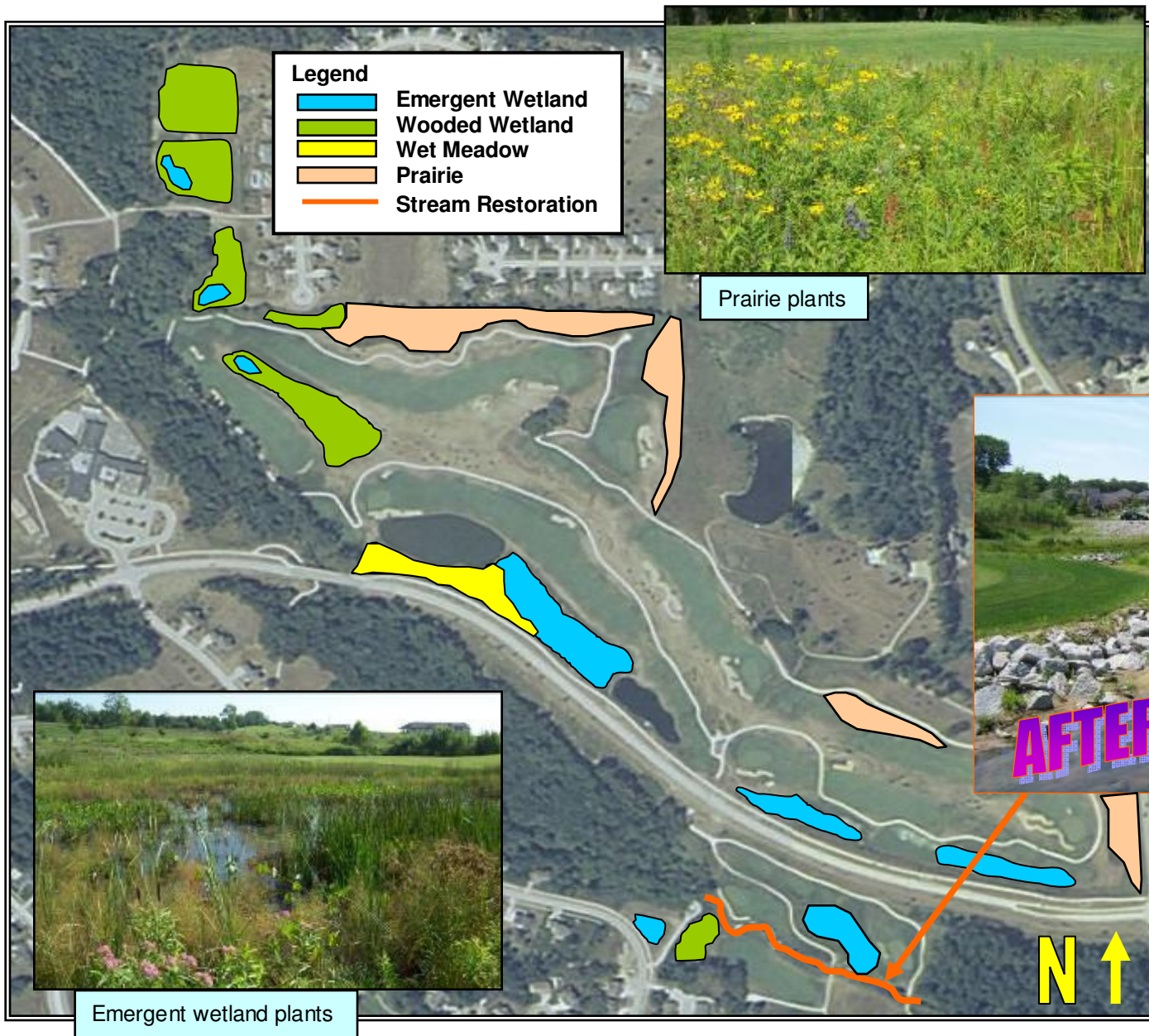
### How To Get There

From Coralville, follow 1<sup>st</sup> Avenue north of I-80 and turn left on Oakdale Boulevard to reach the southern areas of the golf course. Or, continue north on 1<sup>st</sup> Avenue, turn left and follow Auburn Hills Drive to the end to reach the northern areas.



## Wetland & Prairie Profile

Location:	Coralville's Brown Deer Golf Course
Type of Wetland:	Forested & open water emergent
Type of Prairie:	Open savanna
Date Constructed:	October 2004
Size of Wetland:	11 acres
Size of Prairie:	6 acres
Mitigation Plan by:	Judith J. Krieg, P.W.S. EarthView Environmental L.L.C.



There is an abundance of native plants to be found in the wetland, prairie, and stream restoration sites. Keep an eye out for: Black Eyed Susan, Cardinal Flower, Pickeral Weed, Blue Vervain, Wild Iris, Buttonbush, Wild Plum, River Birch, Meadow Sweet, Red-Osier Dogwood, Arrowhead, Pecan, Kentucky Coffee Tree, Hazelnut, Service Berry, Indigo Bush, Ninebark, Shellbark Hickory, and many, many more!



Stream restoration – 1<sup>st</sup> Year

The stream restoration project has protected and restored over 1000 feet of Muddy Creek. Watch as native plants start growing along the newly restored stream banks.

